

Newberry Springs Parkland Improvement Concept Plan

**Community-Developed Concepts for Park Improvement
2026**



Acknowledgements

This concept plan was made possible thanks to the collaboration and support of community members, leaders and park advocates in Newberry Springs, including:

Community Members

Foundations for Future Generations

Main Street Murals

Newberry Springs Chamber of Commerce

Newberry Springs Economic Development Association

Newberry Springs Community Services District

San Bernardino County Department of Public Works

With technical assistance provided by:



NPS-RTCA

Rivers, Trails and Conservation Assistance Program

Table of contents

Acknowledgements	2
Mission and Vision	4
Project Description	5
Community Engagement and Participatory Process	12
Selected Design Concept	24
Preliminary Cost estimate	26

Mission Statement

To enhance existing parkland for residents and visitors through infrastructure improvements and recreation/education activities.

Vision Statement

A vibrant sustainable parkland that enhances the quality of life for residents and visitors, promotes environmental awareness and fosters community.

Project Description

Goal

The goal of this project was to develop a concept design for the improvement of the Newberry Springs Parkland, an existing park in the community of Newberry Springs. It is managed by the Newberry Community Services District.

NPS-RTCA received a request for technical assistance in the following areas:

- developing a concept plan for the park through a participatory planning and design process,
- identifying and engaging project partners and stakeholders,
- identifying strategies for community outreach and engagement which would lead to participation in the planning and design processes,
- and developing a preliminary cost estimate which will help NCSA and the community to pursue funding opportunities and strategically implement the design in phases.

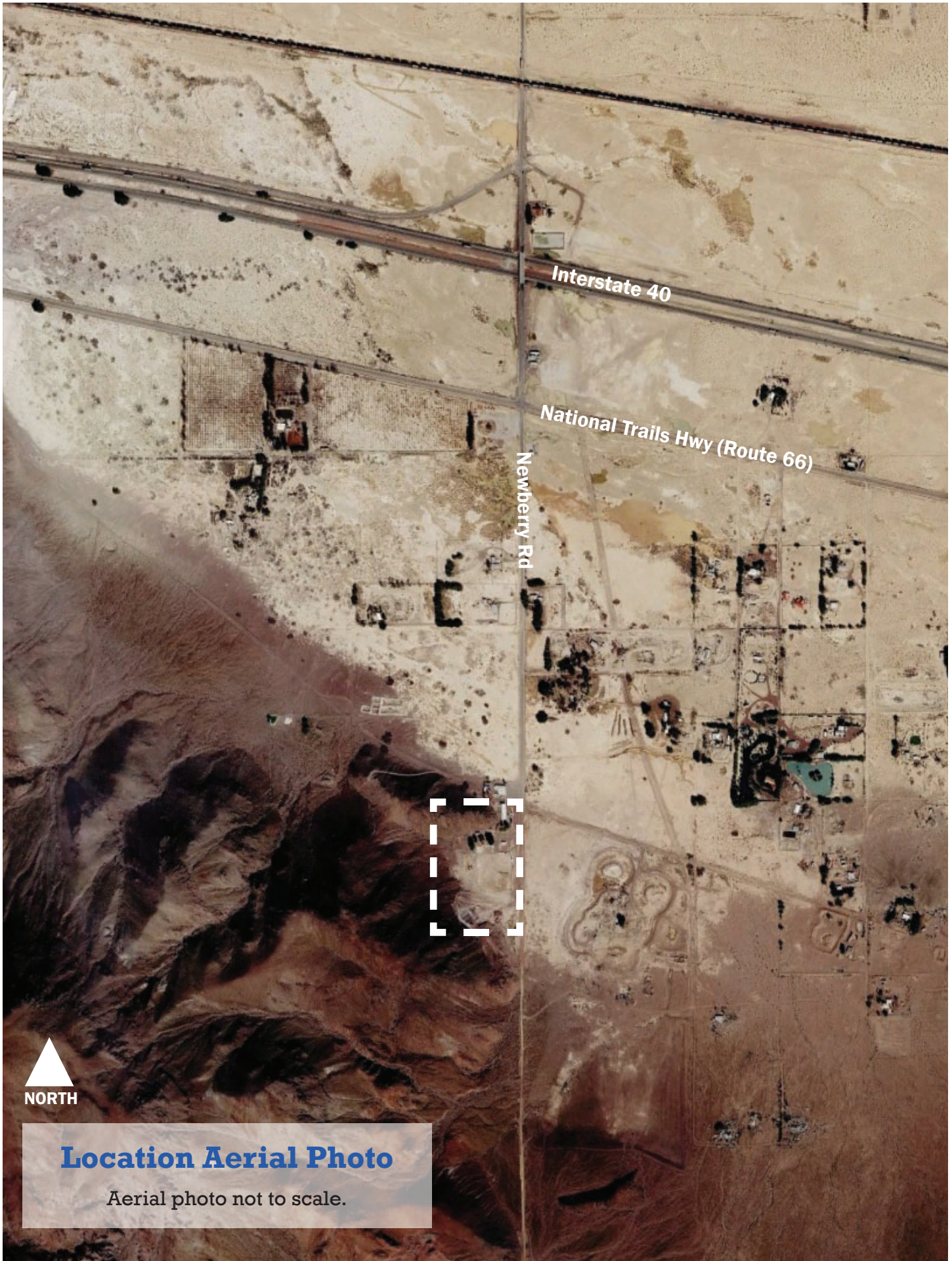
Location

The project site is located in the community of Newberry Springs, along Newberry Road, south of its intersections with Interstate 40 and Route 66.

Site

The site is an existing park, approximately 7 acres in size. It is bordered on the West and Northwest by hills which are habitat to native vegetation, Bighorn sheep and other wildlife. Newberry Road runs along its Eastern edge. And a former gravel pit borders the Southern edge.

The park is very popular with the community, and has an existing baseball diamond, a playground, a zip line, fitness equipment, a small shaded picnic area under the only large trees on the site, a restroom building, and a community center with an adjacent lush garden.



NORTH

Location Aerial Photo

Aerial photo not to scale.



Newberry Rd

NORTH

Site Aerial Photo

Not to scale.



Community Center Building.



View of adjacent hills and native vegetation.



Existing garden



Mural on the side of the Community Center Building.



View of the baseball field and zip line



Existing restroom building.



Existing picnic area and playground.



View of limited shaded seating and existing tamarisk trees.

Community Engagement and Participatory Process

A kick-off meeting and initial site visit was followed by a series of three community planning workshops and a site observations visit. The planning team met onsite four times between September 2024 and January 2025 to define a mission and vision for the park, analyze stakeholders, design engagement strategies, gather and analyze site information, define opportunities and constraints. Additional online meetings and phone calls also took place in between the onsite meetings.

The site observation visit in November 2025 allowed NPS-RTCA staff to get observe patterns of use and issues at the site during its most popular annual event, the Pistachio Festival.

The series of planning workshops culminated in a design charrette, which was held in February 2026, and which produced two design concepts from the park. All planning meetings, site visits and the design charrette were open to the community.

Next, a survey captured the community's preference for either of the two design concept options.

Finally, the Newberry Community Services District selected one of the two options by a majority vote of its Directors.

Kick-off Meeting **September 10th, 2024**

This was our project kick-off, initial site visit, and first planning meeting. The team walked the site, defined the scope of the project, discussed needs, developed a work plan, and drafted mission and vision statements, which were finalized and adopted in the next meeting.

A Bighorned sheep made an appearance on the hill next to the community center and stood there for us a too see it through the window.

Planning Workshop 1 **October 1st, 2024**

This meeting focused on site analysis and gathering existing data and information about the park. Strengths, weaknesses, opportunities and constraints (SWOT) were analyzed.



Bighorn sheep showed up outside the community center during the kick-off meeting

WORKING WELL!

- Pistachio Festival
- Kick ball tournaments
- ball field
- staff
- dog walkers
- functions as town square/
community hub
- symbolizes community's
generosity
- NCS leadership
- community center
- the views
- access from Route 66
- good place for youth progr.
- brings together
people who care
- NCS Board collaboration
- good communication
- Events
- wildlife habitat
- proximity to Barstow

COULD BE BETTER

- Kitchen up to spec
- could increase revenue
- parking space
- expand play areas
- water availability
- dust mitigation
- wildlife interpretation
- sustainability/maint. cost
- accessibility
- more programs
- water trough for sheep
- funding from festivals
- extending partnerships
- place to learn history/heritage
- acoustics of mtg. room
- nighttime use
- ADA facilities
- curb appeal
- structural integrity
- safety

Analysis of strengths and weaknesses.

wayfinding signage

- parking area surface
- parking accessibility

Site Observations: Pistachio Festival November 2nd, 2024

The annual pistachio festival is the site's most popular annual event. It attracts many visitors from Newberry Springs and beyond. It offered a great opportunity to observe the site at its highest level of use, and identify patterns of use, opportunities to improve services and amenities, and issues with parking and accessibility.



2024 Pistachio Festival photos.



Planning Workshop 2

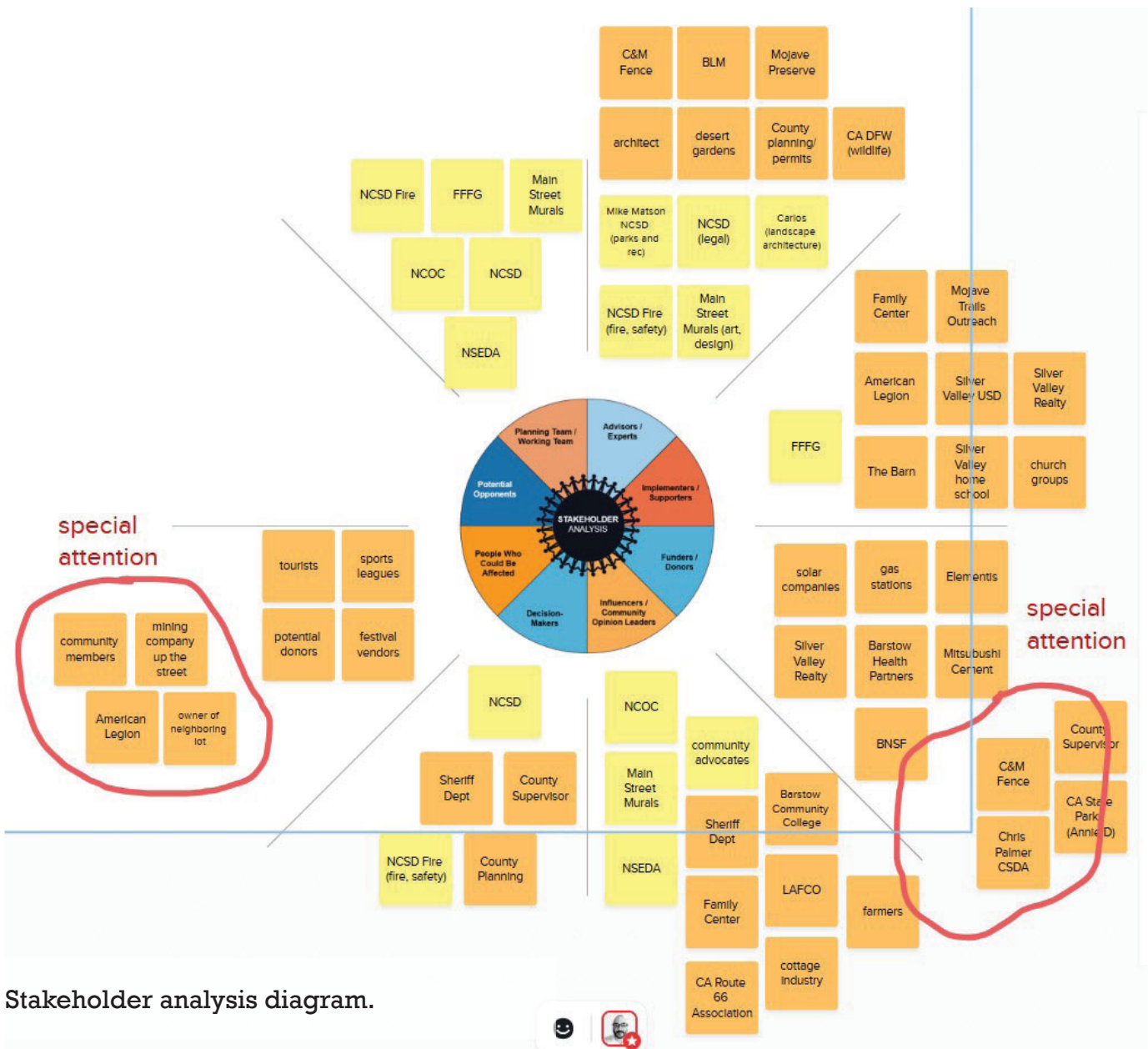
December 10th, 2024

The planning team analyzed the park's stakeholders and identified engagement strategies that could get people to participate in the process, as well as anticipated interest and influence from each group of stakeholders. This process continued in a second meeting, online, using Zoom and Mural.

Planning Workshop 3

January 16th, 2025

The planning team continued engaging the community and began preparing for a design charrette the following month.



Stakeholder analysis diagram.

Design Charrette

January 16th, 2025

A community design charrette took place on February 6th, 2025. It attracted over sixty people, including many community members, as well as officials and staff from NCSD, the Sheriff's Department, the Fire Department, and all project partner organizations.

From NPS-RTCA, two staff landscape architects attended to facilitate the charrette and capture ideas on maps and drawings.

The event started with a welcome and an overview of the agenda at the community center building. Next, a guided walk-through of the site was led by NPS-RTCA and community leaders. Opportunity and constraints areas were discussed along the walk, as well as places of special interest or significant value to community members.

After the walk-through, the group gathered again at the community center for a two hour design charrette and working lunch.

In the end, the charrette produced two design concepts - options A and B.



Site walk-through.



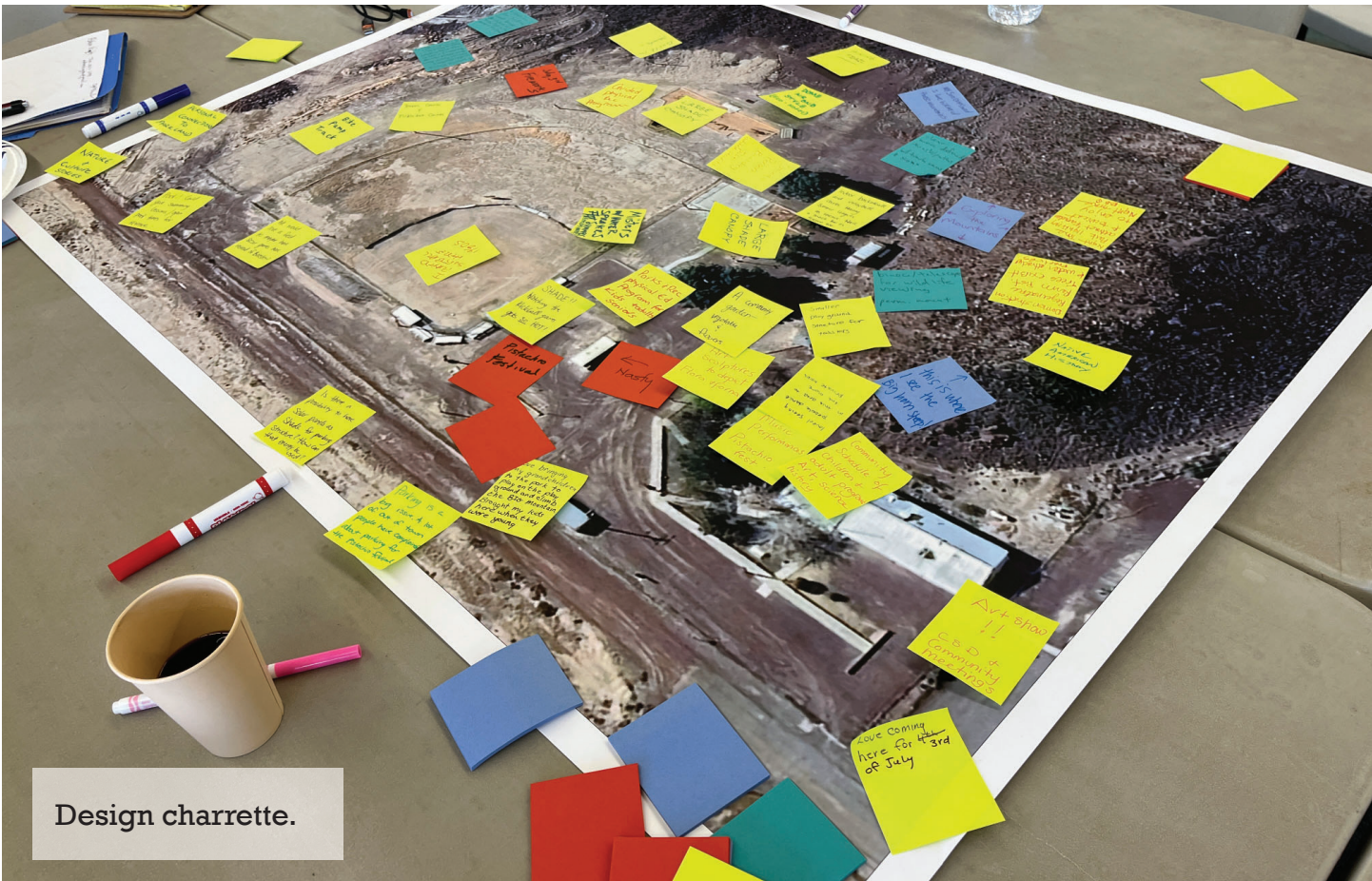
Site walk-through.



Site walk-through.



Design charrette.



Design charrette.



Kerry Lankford from NPS-RTCA discusses the park with Sheriff's Deputies and community members.



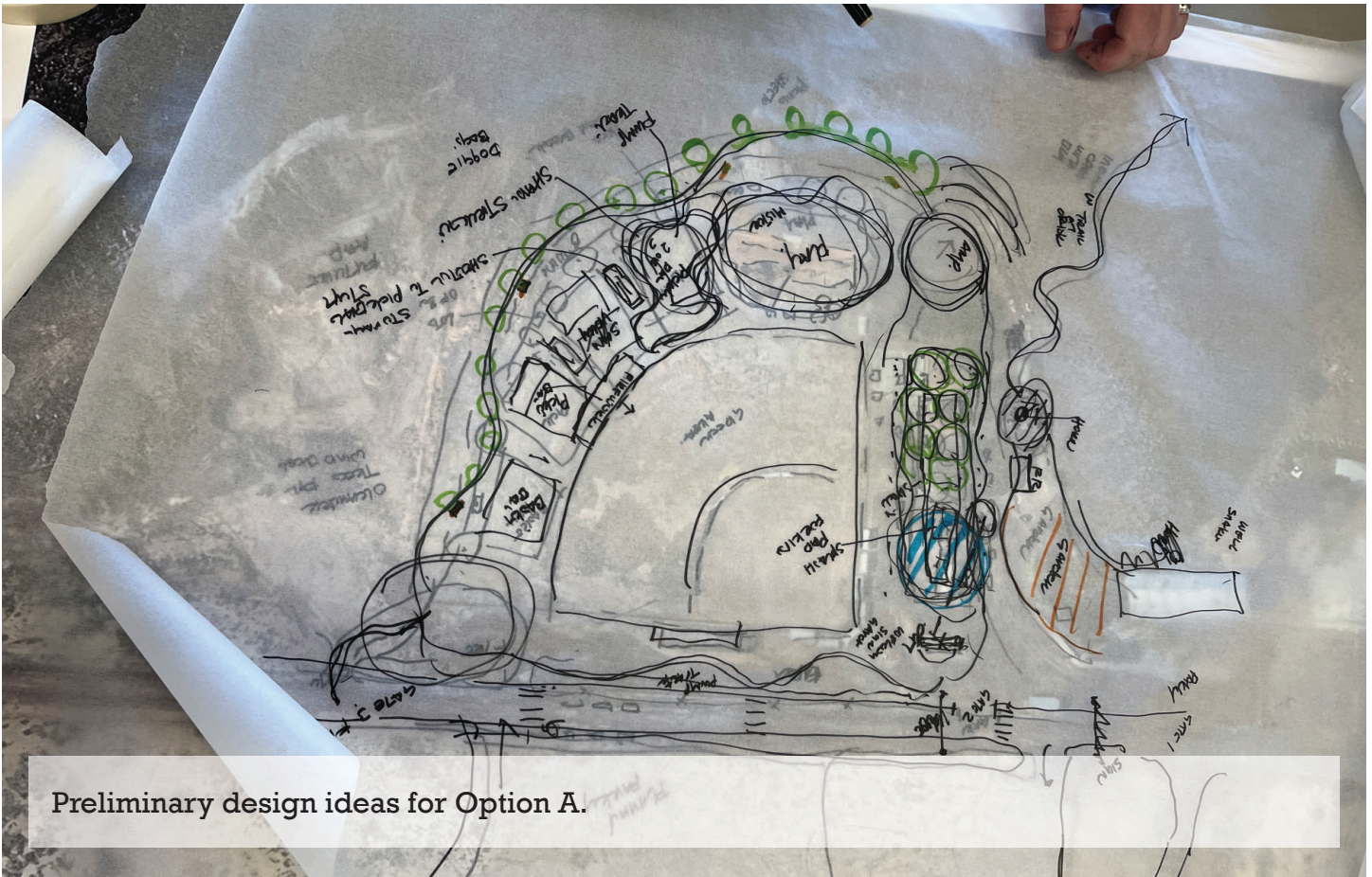
NCSD Director Matson discusses design ideas with members of the Fire Department.



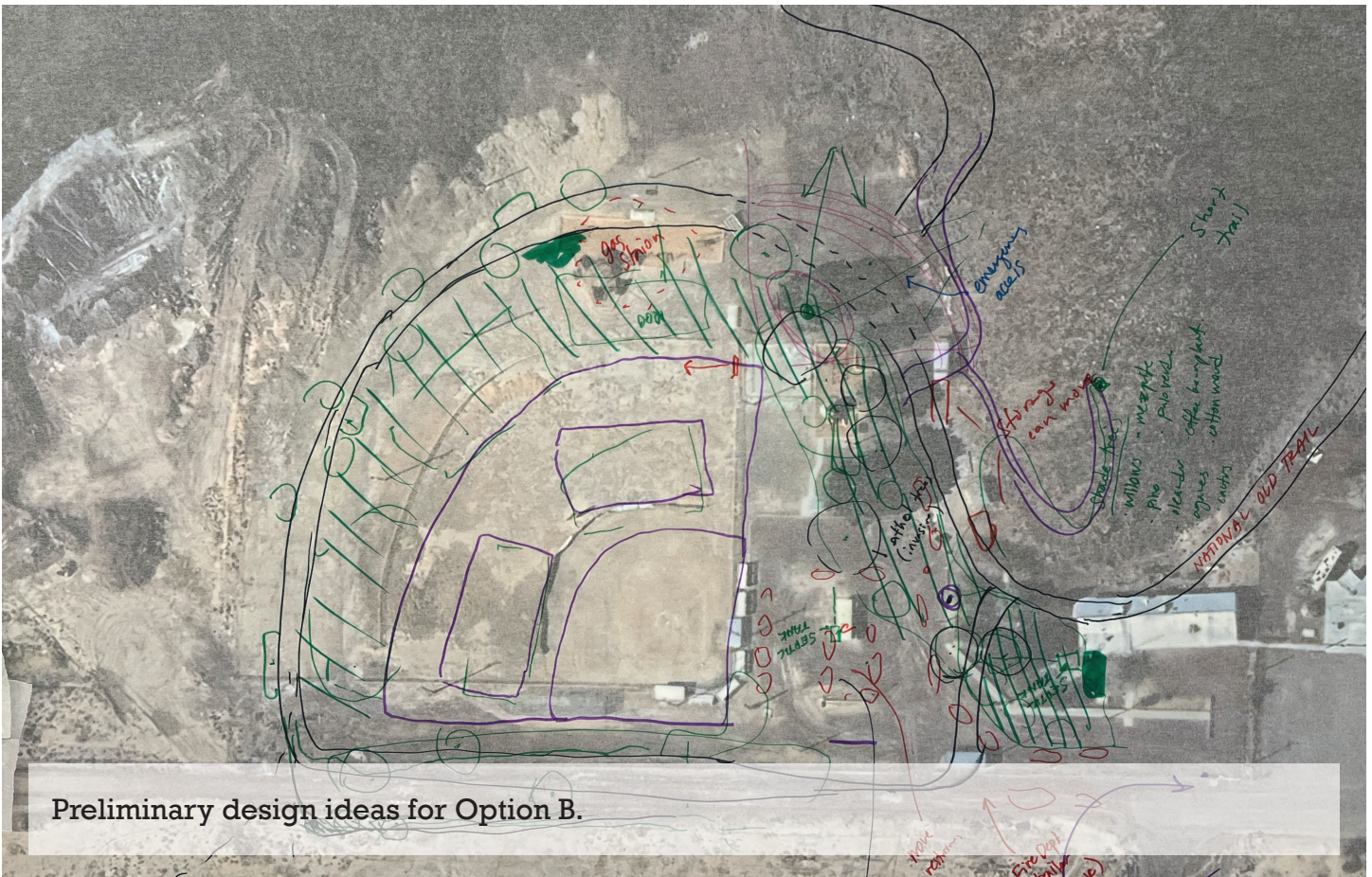
Community members at a design table.



Community members at a design table.



Preliminary design ideas for Option A.



Preliminary design ideas for Option B.

Design Concept - Option A

NEWBERRY SPRINGS PARK CONCEPT

OPTION A



PLAZA EVENT SPACE



PLAY EQUIPMENT



BASKETBALL COURT



PICKLEBALL



PUMP TRACK



GAZBO PICNIC SHELTER





AMPHITHEATER



SPLASH PAD



ARTIFICIAL GRASS FIELD



ARTIFICIAL GRASS PLAZA SPACE



PLAZA SEATWALL

NOTE: THIS PLAN IS A FEASIBILITY STUDY ILLUSTRATING NEWBERRY SPRINGS PARKS CAPACITY TO ACCOMMODATE OUTDOOR SPACE ELEMENTS AND RECREATIONAL EXPERIENCES. THIS SHOULD NOT BE INTERPRETED AS A "TIE DYE" OR A CONSTRUCTION DOCUMENT.

March 15, 2025



Design Concept - Option B

NEWBERRY SPRINGS PARK CONCEPT

OPTION B




PLAZA EVENT SPACE



PLAY EQUIPMENT



BASKETBALL COURT



PICKLEBALL



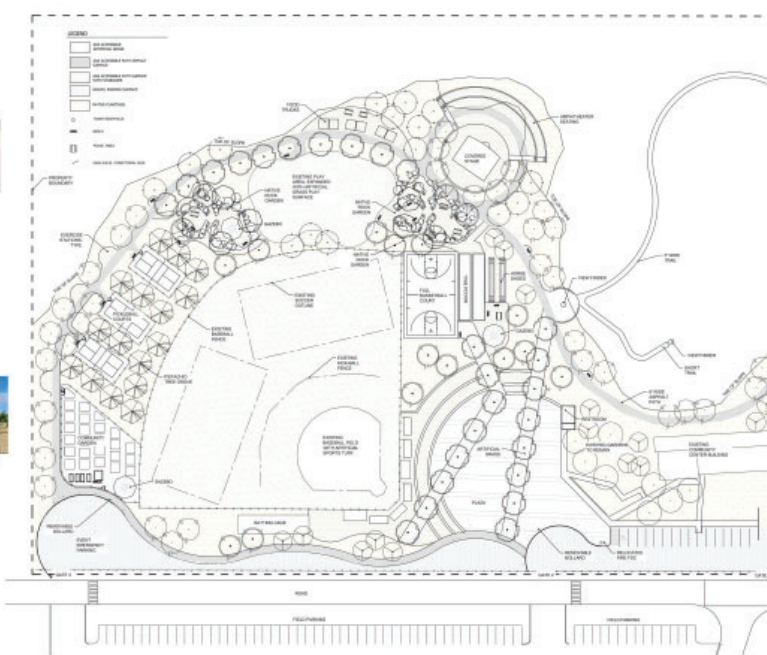
PISTACHIO TREE GROVE



COMMUNITY GARDEN



GAZBO PICNIC SHELTER






AMPHITHEATER



ROCK GARDEN



ARTIFICIAL GRASS FIELD



ARTIFICIAL GRASS WITH PLAZA TREES



BOCCE BALL AND HORSE SHOES

NOTE: THIS PLAN IS A FEASIBILITY STUDY ILLUSTRATING NEWBERRY SPRINGS PARKS CAPACITY TO ACCOMMODATE OUTDOOR SPACE ELEMENTS AND RECREATIONAL EXPERIENCES. THIS SHOULD NOT BE INTERPRETED AS A "TIE DYE" OR A CONSTRUCTION DOCUMENT.

March 15, 2025



Survey

July to August, 2025

A survey developed by the project partners followed the design charrette. It was between July 3rd to August 26th, 2025. Respondents were asked which of the two options, A or B, they preferred, as well as which design amenities in either concept were their favorite. The survey also provided an opportunity to share additional comments.

A total of 30 people responded. A majority of them (22) preferred Option A. And it is important to note that even when some people preferred Option B (8), many of those respondents also listed as favorite amenities some of the things included in Option A, such as a trail, outdoor amphitheater, more seating, a splash pad, a gazebo, and pickleball courts.

Several people commented that the park should “keep it simple”, make the space greening, and focus on easy maintenance.

Survey Results Page 1 of 2

Newberry Community Services District
Parkland Survey Results

Survey Dates 7/3-8/26/2025

Community	Preferred Park Concept	Top 3 Favorite Things			Notes
NBS	A	Splash Pad	Pickle Ball/Basket Ball	Amphitheater	Keep it simple and easy to maintain; Keep in mind July 3rd & Pistachio Festival & vendors & traffic
NBS	A	Splash Pad	Picnic Area	Play Yard	Lighting & Security - Wild Dogs - Parking
NBS	A	Splash Pad	Artificial grass area	Community Garden	More community involvement
NBS	A	Shade	Water play feature	ground cover all over	Don't impact Big Horn Sheep. Ground cover to minimize dust. Shade/not always from trees. Decorative stone/????? Asphalt path depicting history route 66.
NBS	A	Pump track	Turf on the grass field with	Splash Pad	Keep up the good work!
NBS	A	Splash Pad	B??? C???	Basketball court	
Barstc	A	Water/Splash Pad	Pump Track	Event Space	
NBS	A	Pickle Ball	Splash Pad	Gazebo picnic shelter	
NBS	A	Splash pad	hicking trails	splash pad	More restrooms to more central area
NBS	A	Trees	Splash Pad	bike trail	More greener the better
NBS	A	Trees	Splash Pad	bike trail	The greener the better
NBS	A	Pump track	Splash Pad	Track from B made	Thank you for all the work you put into the concepts
NBS	A	Water feature	community garden	Plaza Event Space	
NBS	A	Water feature	Covered Stage	Community Garden	A=Water Feature and B=Community Garden
NBS	A	Splash Pad	Covered Stage	Gazebo	Community Garden
NBS	A	Water feature	Gazebo		Community Garden; dog park sectioned off
NBS	A	Community Garden	Splash Pad	Gazebo	
NBS	A	Pickle Ball	Splash Pad	Gazebo picnic shelter	
NBS	A	Pump track	Play equipment	Event Space	
NBS	A	Walking trail	Picnic shelter	Pickle Ball	A+the walking trail from B. Thank you for the work you do
NBS	A	Walking trail	Picnic shelter	Pickle Ball	A+the walking trasil from B. Thank you for the work you do
NBS	A	Splash Pad	Pickleball/basketball Courts	Amplitheater	Keep it simple and easy to maintain; Keep in mind July 3rd & Pistachio Festival & vendors & traffic
NBS	A+B	Ballfield	Amphitheater	Full B'ball & several pickleball courts	B+Community gardens - bad concept; most people have home gardens. Need the kid playground! (Besides the Splash pad which everyone will use) The present playground is heavily used.

Survey Results

Page 2 of 2

Newberry Community Services District
Parkland Survey Results

Survey Dates 7/3-8/26/2025

Community	Preferred Park Concept	Top 3 Favorite Things			Notes
NBS	B	Community Garden	Exercise Station	Splash Pad	Part of both mostly B but add A's splash pad; More trees for shade
NBS	B	Pistachio tree ???	Gazebo	Community Garden	Shade Trees, Please
NBS	B	Community Garden	sports courts	rock garden	Make the amphitheater blend into the mountain, take away 0% of the natural beauty.
NBS	B	Landscape Design	Circulation		
NBS	B	Rock garden	Artificial grass field	play equipment	Not at the moment! Just, Thank you!
Barstc	B	Amplitheater	Water park		Parts of both; More to do
NBS	B	Community Garden		Overall dersign	Can expand the community garden and encourage youth to participate.
NBS	B	Interpetive Trail - Natur	pickleball Courts	Amplitheater	Keep & extend Young children's playground & older fitness playground with shade areas.
NBS	Both	A is more spacious than	Restroom in A should be in a more central		
NBS		Safety	Seating	Outdoor Bathrooms	
NBS					Neither; neither are actionable; B-National Old Trails are reconstructed: no pickle ball, no comm Garden, should leave the fitness park; needs children's play area; Amplitheater-Maybe. A-eliminate pickleball & basketball; needs to be preserved for fireworks; there is no emergency vehicle access; Can you furnish a maintenance/operation cost estimate for the splash pad.
NBS		Play equipment	Splash Pad	Pump track	They are now in NBS
NBS		Amplitheater			B=Pickle ball court also painted for tennis court & big enough. Love the Boccia Ball & horse shoe fields
NBS	A&B	Bike part	Pump Track		Skate park; They are now in NBS
Yermo		More Trees			750" Splash Pad \$258K

A=	22
B=	8

Selected Design Concept: Option A

NEWBERRY SPRINGS PARK CONCEPT

Selected Design Concept

Final Decision
October 28th, 2025

During the October Regular Meeting of the Newberry Community Services District, the agenda included discussion and public comment of the two design concept options.

After discussing questions and concerns, as well as having considered public comment and the results of the survey, a motion was raised to vote for a design concept option.

Option A was selected with four directors voting in favor, zero voting against, and one abstention. This option was also the preferred one by the majority of the survey respondents.

This option increases tree canopy cover and shade throughout the park. It reduces soil erosion and dust by reducing areas of exposed soil. It maintains existing gardens and paths to the community center. It maintains but improves an existing baseball diamond. It adds recreation amenities including pickleball and basketball courts, a pump track, and expands an existing play area. It adds a new splash pad, an outdoor amphitheater, additional seating, new restrooms, a new trail along and improves parking, including a designated area for staging emergency vehicles during events.



PLAZA EVENT SPACE



PLAY EQUIPMENT



BASKETBALL COURT



PICKLEBALL



PUMP TRACK



GAZEBO PICNIC SHELTER



March 15, 2025



AMPHITHEATER



SPLASH PAD



ARTIFICIAL GRASS FIELD



ARTIFICIAL GRASS PLAZA SPACE



PLAZA SEATWALL

NOTE:
THIS PLAN IS A FEASIBILITY STUDY,
ILLUSTRATING NEWBERRY SPRINGS PARK'S
CAPACITY TO ACCOMMODATE CERTAIN
OUTDOOR SPACE ELEMENTS AND
RECREATIONAL EXPERIENCES. THIS SHOULD
NOT BE INTERPRETED AS A "SITE DESIGN" OR A
CONSTRUCTION DOCUMENT.



NATIONAL PARK SERVICE

Preliminary Cost Estimate

Upon selection of Option A, NPS-RTCA staff developed a preliminary cost estimate, upon request from the project partners. This estimate was itemized in order to better assist in prioritization of different park amenities, as well as to more easily plug in future item costs.

Preliminary Cost Estimate

Page 1 of 5

Newberry Springs Park Cost Estimate

March 24, 2026



Note:

This cost estimate is a part of a feasibility study, illustrating and estimating Newberry Springs Park's capacity to accommodate certain outdoor space elements and recreational experiences. This estimate should not be interpreted as a final construction estimate.

Item No.	Item Description	Est'd Quantity	Unit	Unit Price	Total Amount
	General Conditions (Allowance)				
	Mobilization	1	LS	\$5,000.00	\$5,000
	Construction entrance	1	LS	\$1,500.00	\$1,500
	Silt fence erosion control	1	LS	\$1,500.00	\$1,500
	Misc. demolition, restroom building, play area woodchips, etc.	1	LS	\$35,000.00	\$35,000
	Disposal of material off-site	1	LS	\$15,000.00	\$15,000
	Re-locate fire FDC 184 LF	184	LF	\$62.00	\$11,408
	1" potable water service line: assumes (3) drinking fountains, back flow preventer, and 1" meter, locations include near sports courts, play area and restroom	1,091	LF	\$34.00	\$37,094
	Plaza, pump track, pickleball, amphitheater, basketball and play area, water play, storm area drain and forever lawn underdrain connection to existing with 6" storm line 1,218 LF	1,218	LF	\$32.00	\$38,976
	Area drains: assumes (3) plaza, (2) pump track, (1) pickleball area, (1) amphitheater area, (1) basketball and (1) play area, (1) water play	10	EA	\$375.00	\$3,750
	8" concrete plaza lot and emergency access drive ramp and apron note: to allow food cart and emergency access	2	EA	\$3,700.00	\$7,400
	Site lighting for security	1	LS	\$5,000.00	\$5,000
	Sanitary, water and electrical connections to restroom building	1	LS	\$15,000.00	\$15,000
	Electrical: assumes (3) gazebos, (8) in plaza seatwalls for food truck hookup, and water play	1	LS	\$5,000.00	\$5,000
	Embankment cut and fill as needed (crushed rock walking surface)	1	LS	\$15,000.00	\$15,000
	Hose bib water service line: assumes (3) gazebos, (1) amphitheater, (2) sports court area, (3) plaza seatwalls for food truck area	1,091	LF	\$34.00	\$37,094
	General utility work as needed	1	LS	\$15,000.00	\$15,000
	Grading for across road farm field parking- allowance	1	LS	\$15,000.00	\$15,000
	Embankment cut and fill as needed includes fill for building removal and pump track fill to create topography	1	LS	\$50,000.00	\$50,000
	Site grading - general	259,320	SF	\$0.10	\$25,932
	Total				\$339,654

Preliminary Cost Estimate

Page 2 of 5

Item No.	Item Description	Est'd Quantity	Unit	Unit Price	Total Amount
	Site Furnishings				
	Bench (includes 20% for install) Manufacturer: Dumor, Inc	12	EA	\$950.00	\$13,680
	View finder (includes 20% for install)	1	EA	\$3,199.00	\$3,839
	Trash receptacles (includes 20% for install) Manufacturer: Dumor, Inc	8	EA	\$840.00	\$8,064
	Picnic tables (includes 20% for install) Manufacturer: Dumor, Inc	10	EA	\$2,530.00	\$30,360
	Pedestal tables with game tops (includes 20% for install) Manufacturer: Dumor, Inc	3	EA	\$2,294.00	\$8,258
	Picnic table ADA (includes 20% for install) Manufacturer: Dumor, Inc	1	EA	\$2,796.00	\$3,355
	Hose bib: assumes placement (3) gazebos, (1) amphitheater, (2) sports court area, (3) in plaza seatwalls for food truck area (includes 20% for install)	9	EA	\$300.00	\$3,240
	Drinking fountain / jug filler / with disposal trench and drywell (includes 20% for install) Manufacturer: Murdock, locations include near sports courts, play area and restroom,	3	EA	\$3,900.00	\$14,040
	Bike repair station - 2 bikes (includes 20% for install) in or near pump track gazebo	1	EA	\$1,100.00	\$1,320
	Bike racks (single loop 2 bikes) (includes 20% for install) Manufacturer: Dumor, Inc - 3 sets in locations near sports courts, play area / pump track and park entry	15	EA	\$275.00	\$4,950
	Removable bollards (includes 20% for install) Manufacturer: Dumor, Inc	11	EA	\$475.00	\$6,270
	Play horn - history art piece (includes 20% for install)	1	EA	\$5,000.00	\$6,000
	Shipping - 10% of total site furnishings				\$10,338
				Total	\$113,714

Preliminary Cost Estimate

Page 3 of 5

Item No.	Item Description	Est'd Quantity	Unit	Unit Price	Total Amount
	Surfacing				
	Crushed rock walking surface includes 4" depth, 1/4" minus crushed rock 37,905 SF	4211	SY	\$12.00	\$50,532
	5' wide gravel trail allowance includes 4" depth, 3/8" minus crushed rock 13,045 SF (short trail and long trail to view points, length to be determined) 3,249 sf	361	SY	\$12.00	\$4,332
	Plaza 6" concrete paving, float broom finish (includes base rock and prep.) note: 6" depth with bar to support food carts	33,542	SF	\$9.00	\$301,878
	4" concrete paving, float broom finish (includes base rock and prep.) (includes amphitheater stage, (1) restroom floor and (3) gazebo floors)	3117	SF	\$8.00	\$24,936
	Basketball 4" concrete paving, float broom finish, saw cut (includes base rock and prep.)	5040	SF	\$8.50	\$42,840
	Plaza 4' x 4' tree cut-out in concrete plaza	8	EA	\$500.00	\$4,000
	Crushed rock paths between amphitheater walls 4" depth, 1/4" minus crushed rock 14,414 SF (amphitheater)	150	SY	\$12.00	\$1,800
	(3) Gazebo concrete footings	24	EA	\$500.00	\$12,000
	Play area forever lawn placed safety surface, includes underdrain 2,827 SF Manufacturer: Foreverlawn	12,230	SF	\$9.00	\$110,070
	(3) Pickleball court 4" concrete paving, float broom finish, saw cut (includes base rock and prep.)	4852	SF	\$8.50	\$41,242
	Sports field forever lawn placed artificial grass surface, includes underdrain 2,827 SF Manufacturer: Foreverlawn	57,759	SF	\$9.00	\$519,831
	Play area curb	448	LF	\$22.00	\$9,856
	Gravel parking and emergency access road - 2" of 3/4" leveling course and 4" of 1 1/2" base course 26,268 SF	2,918	SY	\$20.00	\$58,360.00
	Pump track asphalt - 3" of class C, 8" aggregate base 4,023 SF	447	SY	\$25.00	\$11,175
	Parking lot - wheel stops ADA space	1	EA	\$500.00	\$500
	Parking lot - striping includes ADA (markers)	1	LS	\$1,250.00	\$1,250
	Parking lot and emergency access road - concrete curb	762	LF	\$22.00	\$16,764
	Plaza- forever lawn placed artificial grass surface, includes underdrain 2,827 SF Manufacturer: Foreverlawn	7,535	SF	\$9.00	\$67,815
	Water play concrete curb	156	LF	\$22.00	\$3,432
				Total	\$1,282,613

Preliminary Cost Estimate

Page 4 of 5

Item No.	Item	Description	Est'd Quantity	Unit	Unit Price	Total Amount
Stairs, Seat Walls, Rockery Walls & Fencing						
	Pickleball fencing 10'		288	SF	\$25.00	\$7,200
	Pickleball gates		3	EA	\$1,500.00	\$4,500
	Crushed rock surface boundary rockery walls as needed (allowance)		1	LS	\$3,000.00	\$3,000
	Amphitheater cultured stone walls/ retaining and seat walls Manufacturer: Cultured Stone		453	LF	\$90.00	\$40,770
	Amphitheater stairs : stone		140	SF	\$80.00	\$11,200
	Plaza cultured stone seat walls: Manufacturer: Cultured Stone		152	LF	\$75.00	\$11,400
					Total	\$78,070
Amenities						
	26' gazebo (includes 40% install cost) \$44,974 shelter and freight. Manufacturer: Poligon		3	EA	\$44,974.00	\$188,891
	Gazebo electrical and security lighting fixtures (3)		1	LS	\$7,500.00	\$7,500
	Water play, 900 SF includes surfacing		1	LS	\$115,200.00	\$115,200
	Basketball kit - backboards / hoop / post (20% install cost)		1	EA	\$3,200.00	\$3,840
	Basketball court surfacing and striping		5,040	SF	\$1.50	\$7,560
	Basketball regulatory sign		1	EA	\$300.00	\$300
	Pickleball kit - net / post (20% install cost)		3	EA	\$2,200.00	\$7,920
	Pickleball court surfacing and striping		4,852	SF	\$1.50	\$7,278
	Pickleball regulatory sign		3	EA	\$300.00	\$900
	Parking lot EV station		1	EA	\$9,500.00	\$9,500
	Additional play structure allowance, all ages \$80,000 (includes 40% install cost and freight) Manufacturer: Playworld or Landscape Structures		1	EA	\$80,000.00	\$112,000
	Restroom design, supply and install, Manufacturer: Romtec		1	EA	\$155,000.00	\$155,000
	Amphitheater stage cover 32' x 14' (includes 40% install and freight) Manufacturer: Poligon		1	EA	\$42,700.00	\$59,780
					Total	\$675,669
Landscape						
	Water wise landscape - native tree / shrubs / mulch / top soil / soil amendment		62,679	SF	\$1.00	\$62,679
					Total	\$62,679

Preliminary Cost Estimate

Page 5 of 5

Item No.	Item	Description	Est'd Quantity	Unit	Unit Price	Total Amount
	Signage					
	Parking area: ADA sign		1	EA	\$250.00	\$250
	Pet waste stations		2	EA	\$189.00	\$378
	Park informational / rules / message board / timber frame		1	EA	\$3,400.00	\$3,400
	Pump track rules / information / message board / small timber frame		1	EA	\$1,700.00	\$1,700
	Park and pump track rules sign		2	EA	\$500.00	\$1,000
					Total	\$6,728
	TOTAL CONSTRUCTION COST					\$2,559,127
	PLANNING/ENGINEERING/SURVEYING COSTS (24% OF CONSTRUCTION COSTS)					\$614,190
	20% CONTINGENCY					\$511,825
	TOTAL PROJECT COST					\$3,685,143

Index: SF-Square Feet EA-Each LS-Lump Sum CY-Cubic Yard LF-Lineal Foot SY-Square Yard

Published
May 2026